



# SN54LS/74LS75 SN54LS/74LS77

**DESCRIPTION** — The TTL/MSI SN54LS/74LS75 and SN54LS/74LS77 are latches used as temporary storage for binary information between processing units and input/output or indicator units. Information present at a data (D) input is transferred to the Q output when the Enable is HIGH and the Q output will follow the data input as long as the Enable remains HIGH. When the Enable goes LOW, the information (that was present at the data input at the time the transition occurred) is retained at the Q output until the Enable is permitted to go HIGH.

The SN54LS/74LS75 features complementary Q and  $\bar{Q}$  output from a 4-bit latch and is available in the 16-pin packages. For higher component density applications the SN54LS/74LS77 4-bit latch is available in the 14-pin package with  $\bar{Q}$  outputs omitted.

## 4-BIT D LATCH

LOW POWER SCHOTTKY

### PIN NAMES

D <sub>1</sub> -D <sub>4</sub>	Data Inputs
E <sub>0-1</sub>	Enable Input Latches 0, 1
E <sub>2-3</sub>	Enable Input Latches 2, 3
Q <sub>1</sub> -Q <sub>4</sub>	Latch Outputs (Note b)
$\bar{Q}$ <sub>1</sub> - $\bar{Q}$ <sub>4</sub>	Complimentary Latch Outputs (Note b)

### LOADING (Note a)

	HIGH	LOW
D <sub>1</sub> -D <sub>4</sub>	0.5 U.L.	0.25 U.L.
E <sub>0-1</sub>	2.0 U.L.	1.0 U.L.
E <sub>2-3</sub>	2.0 U.L.	1.0 U.L.
Q <sub>1</sub> -Q <sub>4</sub>	10 U.L.	5(2.5) U.L.
$\bar{Q}$ <sub>1</sub> - $\bar{Q}$ <sub>4</sub>	10 U.L.	5(2.5) U.L.

### Notes:

- a. 1 Unit Load (U.L.) = 40  $\mu$ A HIGH
- b. The Output LOW drive factor is 2.5 U.L. for Military (54) and 5 U.L. for Commercial (74) Temperature Ranges.

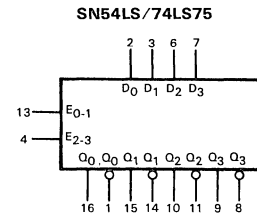
### TRUTH TABLE (Each latch)

t <sub>n</sub>	t <sub>n+1</sub>
D	Q
H	H
L	L

### NOTES:

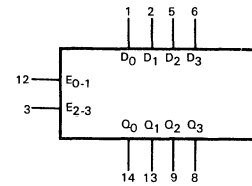
- t<sub>n</sub> = bit time before enable negative-going transition
- t<sub>n+1</sub> = bit time after enable negative-going transition

### LOGIC SYMBOLS



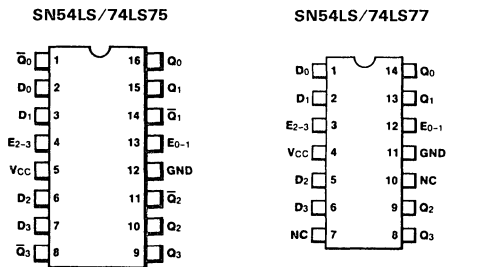
V<sub>CC</sub> = Pin 5  
GND = Pin 12

### SN54LS/74LS77



V<sub>CC</sub> = Pin 4  
GND = Pin 11  
NC = Pin 7,10

### CONNECTION DIAGRAMS DIP (TOP VIEW)



J Suffix — Case 620-08 (Ceramic) J Suffix — Case 632-07 (Ceramic)  
N Suffix — Case 648-05 (Plastic) N Suffix — Case 646-05 (Plastic)

5

SN54LS/74LS75

**DC CHARACTERISTICS OVER OPERATING TEMPERATURE RANGE** (unless otherwise specified)

SYMBOL	PARAMETER	LIMITS			UNITS	TEST CONDITIONS
		MIN	TYP	MAX		
V <sub>IH</sub>	Input HIGH Voltage	2.0			V	Guaranteed Input HIGH Voltage for All Inputs
V <sub>IL</sub>	Input LOW Voltage	54		0.7	V	Guaranteed Input LOW Voltage for All Inputs
		74		0.8		
V <sub>IK</sub>	Input Clamp Diode Voltage		-0.65	-1.5	V	V <sub>CC</sub> = MIN, I <sub>IN</sub> = -18 mA
V <sub>OH</sub>	Output HIGH Voltage	54	2.5	3.5	V	V <sub>CC</sub> = MIN, I <sub>OH</sub> = MAX, V <sub>IN</sub> = V <sub>IH</sub> or V <sub>IL</sub> per Truth Table
		74	2.7	3.5	V	
V <sub>OL</sub>	Output LOW Voltage	54,74	0.25	0.4	V	I <sub>OL</sub> = 4.0 mA V <sub>CC</sub> = V <sub>CC</sub> MIN, V <sub>IN</sub> = V <sub>IL</sub> or V <sub>IH</sub> per Truth Table
		74	0.35	0.5	V	I <sub>OL</sub> = 8.0 mA
I <sub>IH</sub>	Input HIGH Current	D Input		20	μA	V <sub>CC</sub> = MAX, V <sub>IN</sub> = 2.7 V
		E Input		80		
I <sub>IL</sub>	Input LOW Current	D Input		0.1	mA	V <sub>CC</sub> = MAX, V <sub>IN</sub> = 7.0 V
		E Input		0.4		
I <sub>OS</sub>	Short Circuit Current	-20		-100	mA	V <sub>CC</sub> = MAX
I <sub>CC</sub>	Power Supply Current			12	mA	V <sub>CC</sub> = MAX

**AC CHARACTERISTICS:** T<sub>A</sub> = 25°C, V<sub>CC</sub> = 5.0 V

SYMBOL	PARAMETER	LIMITS			UNITS	TEST CONDITIONS
		MIN	TYP	MAX		
t <sub>PLH</sub> t <sub>PHL</sub>	Propagation Delay, Data to Q		15 9.0	27 17	ns	V <sub>CC</sub> = 5.0 V C <sub>L</sub> = 15 pF
t <sub>PLH</sub> t <sub>PHL</sub>	Propagation Delay, Data to $\bar{Q}$		12 7.0	20 15	ns	
t <sub>PLH</sub> t <sub>PHL</sub>	Propagation Delay, Enable to Q		15 14	27 25	ns	
t <sub>PLH</sub> t <sub>PHL</sub>	Propagation Delay, Enable to $\bar{Q}$		16 7.0	30 15	ns	
t <sub>PLH</sub> t <sub>PHL</sub>	Propagation Delay, Enable to $\bar{Q}$		16 7.0	30 15	ns	



SN54LS/74LS77

**DC CHARACTERISTICS OVER OPERATING TEMPERATURE RANGE** (unless otherwise specified)

SYMBOL	PARAMETER		LIMITS			UNITS	TEST CONDITIONS
			MIN	TYP	MAX		
V <sub>IH</sub>	Input HIGH Voltage		2.0			V	Guaranteed Input HIGH Voltage for All Inputs
V <sub>IL</sub>	Input LOW Voltage	54			0.7	V	Guaranteed Input LOW Voltage for All Inputs
		74			0.8		
V <sub>IK</sub>	Input Clamp Diode Voltage			-0.65	-1.5	V	V <sub>CC</sub> = MIN, I <sub>IN</sub> = -18 mA
V <sub>OH</sub>	Output HIGH Voltage	54	2.5	3.5		V	V <sub>CC</sub> = MIN, I <sub>OH</sub> = MAX, V <sub>IN</sub> = V <sub>IH</sub> or V <sub>IL</sub> per Truth Table
		74	2.7	3.5		V	
V <sub>OL</sub>	Output LOW Voltage	54,74		0.25	0.4	V	I <sub>OL</sub> = 4.0 mA I <sub>OL</sub> = 8.0 mA V <sub>CC</sub> = V <sub>CC</sub> MIN, V <sub>IN</sub> = V <sub>IL</sub> or V <sub>IH</sub> per Truth Table
		74		0.35	0.5	V	
I <sub>IH</sub>	Input HIGH Current	D Input			20	μA	V <sub>CC</sub> = MAX, V <sub>IN</sub> = 2.7 V
		E Input			80	μA	
I <sub>IL</sub>	Input LOW Current	D Input			0.1	mA	V <sub>CC</sub> = MAX, V <sub>IN</sub> = 7.0 V
		E Input			0.4	mA	
I <sub>OS</sub>	Short Circuit Current		-20		-100	mA	V <sub>CC</sub> = MAX
I <sub>CC</sub>	Power Supply Current				13	mA	V <sub>CC</sub> = MAX

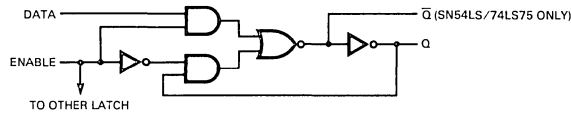
**AC CHARACTERISTICS:** T<sub>A</sub> = 25°C, V<sub>CC</sub> = 5.0 V

SYMBOL	PARAMETER		LIMITS			UNITS	TEST CONDITIONS
			MIN	TYP	MAX		
t <sub>PLH</sub>	Propagation Delay, Data to Q			11	19	ns	V <sub>CC</sub> = 5.0 V C <sub>L</sub> = 15 pF
t <sub>PHL</sub>				9.0	17		
t <sub>PLH</sub>	Propagation Delay, Enable to Q			10	18	ns	
t <sub>PHL</sub>				10	18		

5

SN54LS/74LS75 • SN54LS/74LS77

LOGIC DIAGRAM



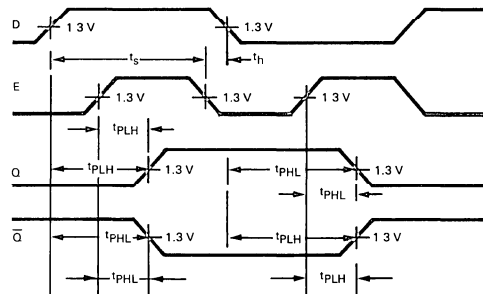
GUARANTEED OPERATING RANGES

SYMBOL	PARAMETER		MIN	TYP	MAX	UNIT
$V_{CC}$	Supply Voltage	54 74	4.5 4.75	5.0 5.0	5.5 5.25	V
$T_A$	Operating Ambient Temperature Range	54 74	-55 0	25 25	125 70	°C
$I_{OH}$	Output Current — High	54, 74			-0.4	mA
$I_{OL}$	Output Current — Low	54 74			4.0 8.0	mA

AC SETUP REQUIREMENTS:  $T_A = 25^\circ\text{C}$ ,  $V_{CC} = 5.0\text{ V}$

SYMBOL	PARAMETER	LIMITS			UNITS	TEST CONDITIONS
		MIN	TYP	MAX		
$t_W$	Enable Pulse Width High	20			ns	$V_{CC} = 5.0\text{ V}$
$t_s$	Setup Time	20			ns	
$t_h$	Hold Time	0			ns	

AC WAVE FORMS



DEFINITION OF TERMS:

SETUP TIME ( $t_s$ ) — is defined as the minimum time required for the correct logic level to be present at the logic input prior to the clock transition from HIGH-to-LOW in order to be recognized and transferred to the outputs.

HOLD TIME ( $t_h$ ) — is defined as the minimum time following the clock transition from HIGH-to-LOW that the logic level must be maintained at the input in order to ensure continued recognition. A negative HOLD TIME indicates that the correct logic level may be released prior to the clock transition from HIGH-to-LOW and still be recognized.

