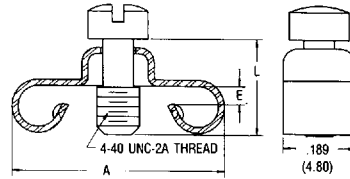


Male Screw Lock Assemblies

material: bichromated steel zinc
1 P/N = 10 screws
2 screws are necessary for one connector

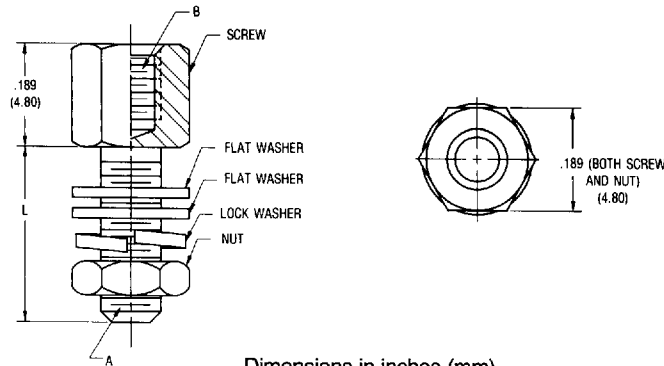


Dimensions in inches (mm)

| P/N | A | 9,15,25,37 contacts | | P/N | A | 50 contacts | |
|-----------------|-------------|---------------------|------------|-----------------|-------------|-------------|------------|
| | | L | E | | | L | E |
| 17 D 20419-21-X | .547 (13.9) | .280 (7.1) | .055 (1.4) | 17 D 20420-12-X | .654 (16.6) | .280 (7.1) | .055 (1.4) |
| 17 D 20419-18-X | .547 (13.9) | .280 (7.1) | .039 (1.0) | 17 D 20420-13-X | .654 (16.6) | .280 (7.1) | .039 (1.0) |
| 17 D 20419-16-X | .547 (13.9) | .280 (7.1) | .047 (1.2) | 17 D 20420-15-X | .654 (16.6) | .280 (7.1) | .047(1.2) |
| 17 D 20419 -X | .547 (13.9) | .280 (7.1) | .031 (0.8) | 17 D 20420-X | .654 (16.6) | .280 (7.1) | .031 (0.8) |

Female Screw Lock Assemblies

material: steel
1 P/N = 10 screws
2 screws are necessary for one connector

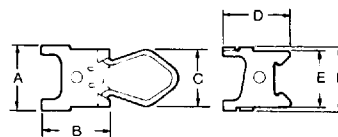


Dimensions in inches (mm)

| P/N | Plating | A | B | L | P/N | Plating | A | B | L |
|-------------------|---------|------|------|--------------|--------------------|---------|------|------|--------------|
| 17 D 20418-2-X | zinc | 4-40 | 4-40 | 0.311 (7.9) | 17 D 20418-39-X | zinc | 4-40 | 4-40 | 0.622 (15.8) |
| 17 D 20418-2M3-X | zinc | M3 | 4-40 | 0.311 (7.9) | 17 D 20418-2T-X | tin | 4-40 | 4-40 | 0.311(7.9) |
| 17 D 20418-33-X | zinc | M3 | 4-40 | 0.335 (8.5) | 17 D 20418-M3E-X | tin | M3 | M3 | 0.311 (7.9) |
| 17 D 20418-M3-X | zinc | M3 | M3 | 0.311 (7.9) | 17 D 20418-2M3E-X | tin | M3 | 4-40 | 0.311 (7.9) |
| 17 D 20418-2L-X | zinc | 4-40 | 4-40 | 0.511 (13.0) | 17 D 20418-43-X | tin | M3 | 4-40 | 0.335 (8.5) |
| 17 D 20418-2LM3-X | zinc | M3 | 4-40 | 0.511 (13.0) | 17 D 20418-2SM3E-X | tin | M3 | 4-40 | 0.622 (15.8) |
| 17 D 20418-2SM3-X | zinc | M3 | 4-40 | 0.622 (15.8) | | | | | |

Spring Latch

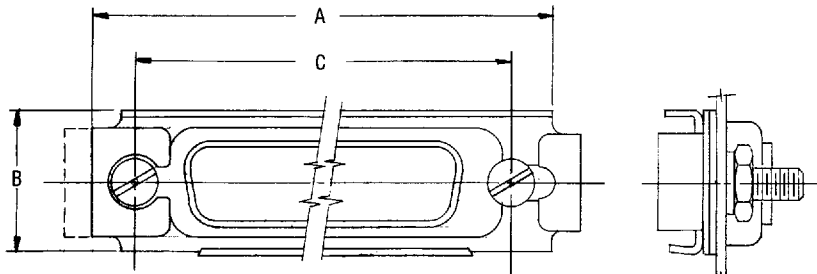
Material:
Steel clear chromate finish
Each order no. includes 2 of each style.



Dimensions in inches (mm)

| Size | Order No. | A | B | C | D | E | F |
|----------|-----------|-------------|-------------|-------------|-------------|-------------|-------------|
| E,A,B,C, | 17-529 | .567 (14.4) | .614 (15.6) | .484 (12.3) | .614 (15.6) | .484 (12.3) | .567 (14.4) |
| D | 17-770 | .681 (17.3) | .614 (15.6) | .610 (15.5) | .614 (15.6) | .610 (15.5) | .681 (17.3) |

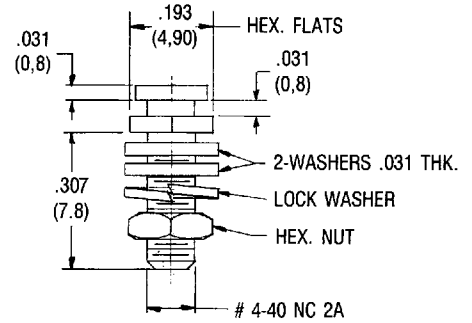
Slide Lock Assemblies (complete set per size)



FRONT VIEW
WITH SLIDE LOCK

Locking Post Assembly

17 D 53018 X (10/pkg)

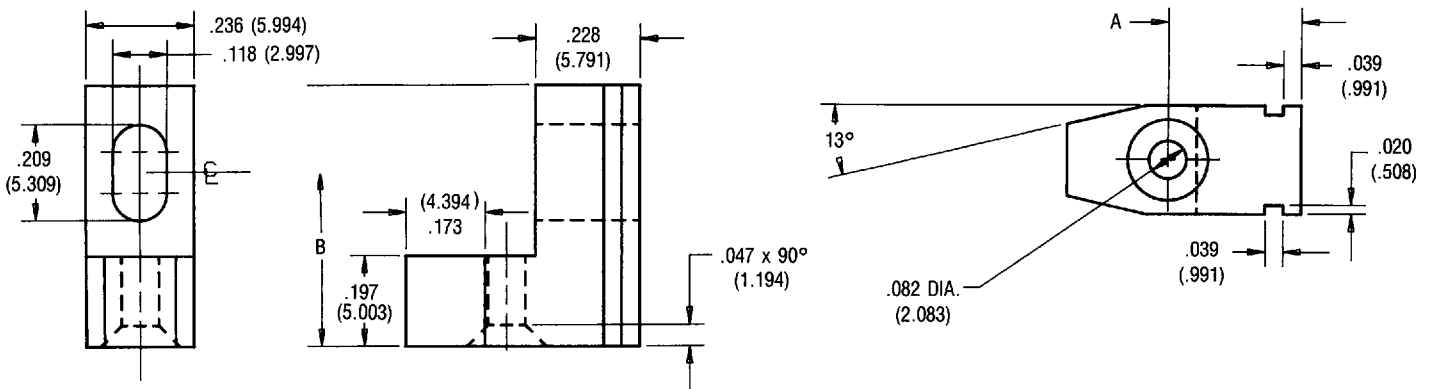


Two required for each connector.

Locking posts for mating connector must be ordered separately.

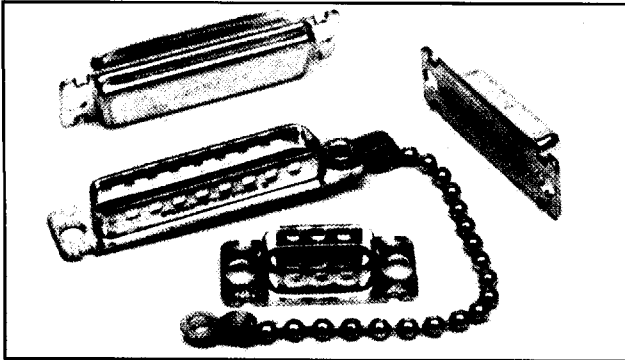
| Size | Part Number | A | B | C |
|------|--------------|---------------|--------------|---------------|
| E | 17-D-51224-1 | 1.370 (34.80) | .500 (12.70) | .984 (25.00) |
| A | 17-D-51220-1 | 1.720 (43.70) | .500 (12.70) | 1.311 (33.30) |
| B | 17-D-51221-1 | 2.260 (57.40) | .500 (12.70) | 1.850 (47.00) |
| C | 17-D-51222-1 | 2.909 (73.90) | .500 (12.70) | 2.500 (63.50) |
| D | 17-D-51223-1 | 2.815 (71.50) | .610 (15.50) | 2.406 (61.10) |

Right Angle Brackets



| Size | A | B | Part Number for Set | Part Number for Bracket without Screw |
|---------|------------|-------------|---------------------|---------------------------------------|
| E,A,B,C | .283 (7.2) | .404 (10.7) | 17-D-4G819-01 | 17-D-4G777-01 |
| D | .339 (8.6) | .419 (11.9) | 17-D-4G820-01 | 17-D-4G778-01 |

Metal Dust Covers for D-Subs



Amphenol's metal dust covers for D-Subminiature connectors can increase connector life by offering protection for the connector contacts while they are un-mated.

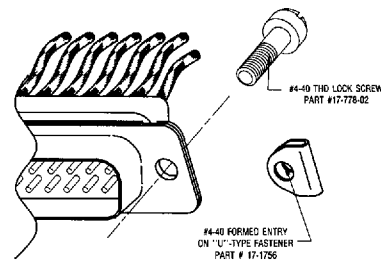
Use of the covers is recommended for industrial applications or in harsh environments where oils or chemicals that could damage the contact reliability are in use.

The dust covers are available with or without chains.

| | Size | Number of Contacts | Cover for Socket (Female) Connector | Cover for Plug (Male) Connector |
|---------------------|------|--------------------|-------------------------------------|---------------------------------|
| Cover without chain | E | 9 | 17D 4K 63010 | 17D 4K 63110 |
| | A | 15 | 17D 4K 63016 | 17D 4K 63116 |
| | B | 25 | 17D 4K 63026 | 17D 4K 63126 |
| | C | 37 | 17D 4K 63038 | 17D 4K 63138 |
| | D | 50 | 17D 4K 63051 | 17D 4K 63151 |
| Cover with chain | E | 9 | 17D 4K 63009 | 17D 4K 63109 |
| | A | 15 | 17D 4K 63015 | 17D 4K 63115 |
| | B | 25 | 17D 4K 63025 | 17D 4K 63125 |
| | C | 37 | 17D 4K 63037 | 17D 4K 63137 |
| | D | 50 | 17D 4K 63050 | 17D 4K 63150 |

Male Screw Retainers for Metal Shell Connectors

17-1756-1 Kit containing two male screws and two retaining clips



Saddle Washers and 4-40 Mounting Screws

17-1764-1 Kit containing two saddle washers and two screws

