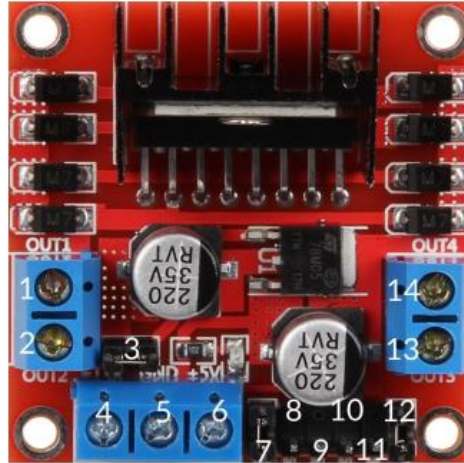


L298N

Dual Full Bridge Motor Driver

PIN Assignment



PIN	
1	DC Motor 1 / Stepper Motor +
2	DC Motor 1 / Stepper Motor GND
3	12V Jumper
4	Power Supply +
5	Power Supply GND
6	5V Output (if Jumper 3 is in place)
7	DC Motor 1 Jumper
8	Input 1
9	Input 2
10	Input 3
11	Input 4
12	DC Motor 2 Jumper
13	DC Motor 2 / Stepper Motor +
14	DC Motor 2 / Stepper Motor GND

Note: Remove the Jumper at position 3 if your power supply is above 12V. This activates the power supply for the on-board 5V regulator.

The 5V output is perfect for supplying power to an Arduino. This output is only active, if the jumper on position 3 is set.