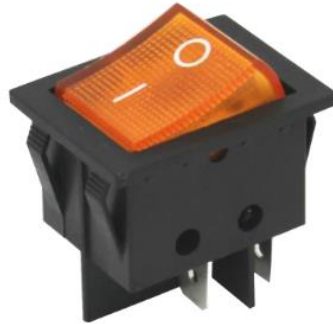




www.lmrelay.com



IRS-201-3C



**Rating**

20A 125VAC; 15A 250VAC;  
35A 12VDC



**Contact resistance**

35mΩ max



**Insulation resistance**

500VDC 100MΩ min



**Dielectric strength**

1500VAC, 1Minute



**Operating temperature**

-25℃~+85℃



**Electrical lif**

10,000Cycle

## IRS-201-3C

### Ordering Information

IRS-201-3C ON-OFF

RS-201-3C ON-OFF

RS-211-3C (ON)-OFF

DPST 4P

### Specification

