

# Components

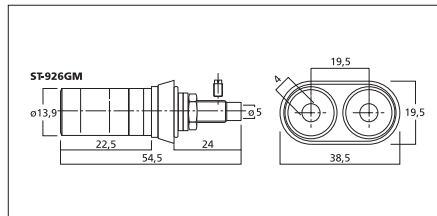
## Cables and Plug-in Connectors

### ST-926GM

Order No. 12.2330

#### High-end speaker terminal

- Gold-plated all-metal connectors
- To be screwed on
- Insulated installation
- For screwing as well as for 4 mm banana plugs

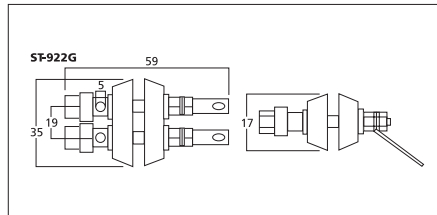


### ST-922G

Order No. 12.2400

#### Speaker terminal, for units.

- Gold-plated contacts
- Plastic covers
- For screwing as well as for 4 mm banana plugs



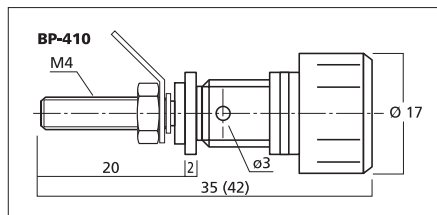
### BP-410

Order No. 34.7070

PAAR PAIR

#### Pair of speaker pole terminals

- Nickel-plated version
- To be screwed and plugged
- For plastic cabinets, uninsulated



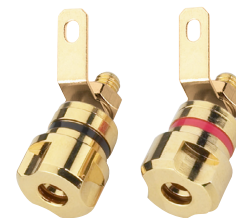
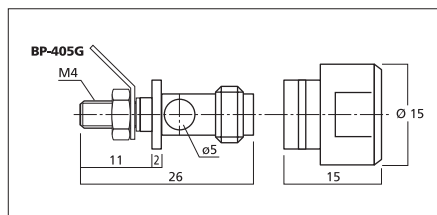
### BP-405G

Order No. 34.7060

PAAR PAIR

#### Pair of speaker pole terminals

- Solid gold-plated version
- To be screwed and plugged
- Suitable e.g. for plastic cabinets, uninsulated



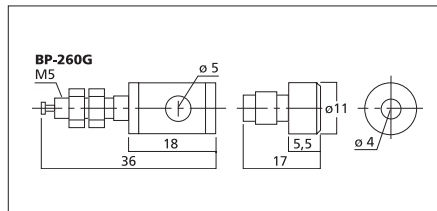
### BP-260G

Order No. 34.0480

PAAR PAIR

#### Pair of speaker pole terminals

- Robust gold-plated version
- To be screwed and plugged
- For insulated use in metal cabinets



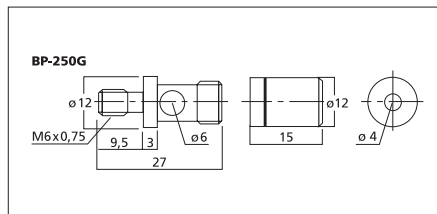
### BP-250G

Order No. 34.2420

PAAR PAIR

#### Pair of speaker pole terminals

- High-quality gold-plated version
- To be screwed and plugged
- For insulated use in metal cabinets



### BP-360/RT

Order No. 34.3480

### BP-360/SW

Order No. 34.3490

#### Binding post for speakers

- With cross hole
- Standard version

